

# Whole of Syria: Education Factsheet April 2016

The Education Sector is comprised of approximately 66 partners including, UN, INGOs, NGOs, Red Cross (SARC and PRCS) and government agencies operating in 14 Governorates. During emergencies, education provides stability and structure and protects children and youth against exploitation and harm. The overarching goal of the Education Sector is to ensure access to safe, equitable and quality education for children and youth affected by the crisis in Syria and to strengthen the capacity of the education system and communities to deliver a timely, coordinated and evidence-based education response.

**KEY FACTS**

- 5.6 MILLION** Children in Need
- 3.5 MILLION** Children Internally Displaced
- 2.1 MILLION** Children Out of School
- 2 MILLION** Children live in Hard to Reach areas
- 0.2 MILLION** Children live in Besieged areas

## SECTOR ACTIVITIES

### ACCESS TO EDUCATION

Activities include rehabilitation of damaged schools and establishment of other safe temporary/alternative learning spaces. Quality non-formal learning initiatives such as Accelerated Learning Programs (ALP), catch-up classes, remedial, literacy and numeracy classes; the provision of pre-primary education and Early Childhood Care and Education (ECCE) services and technical and vocational training (TVET).

### QUALITY OF EDUCATION

Activities work towards improving the quality of education through professional development for teachers, facilitators, volunteers and school staff on child-centred, protective and interactive methodologies, classroom management and psychosocial support. Training and support to deliver self-learning materials, and life-skills; and the distribution of textbooks, teaching and learning materials.

### SYSTEM STRENGTHENING

The Sector response aims to strengthen coordination capacity at the national and sub-national levels. M&E systems are being improved to better inform targeting and programming. Activities also include ways to improve data collection, analysis and reporting related to formal and non-formal education, including the tracking of out-of-school children, school-based management (including learning) and rapid assessments.

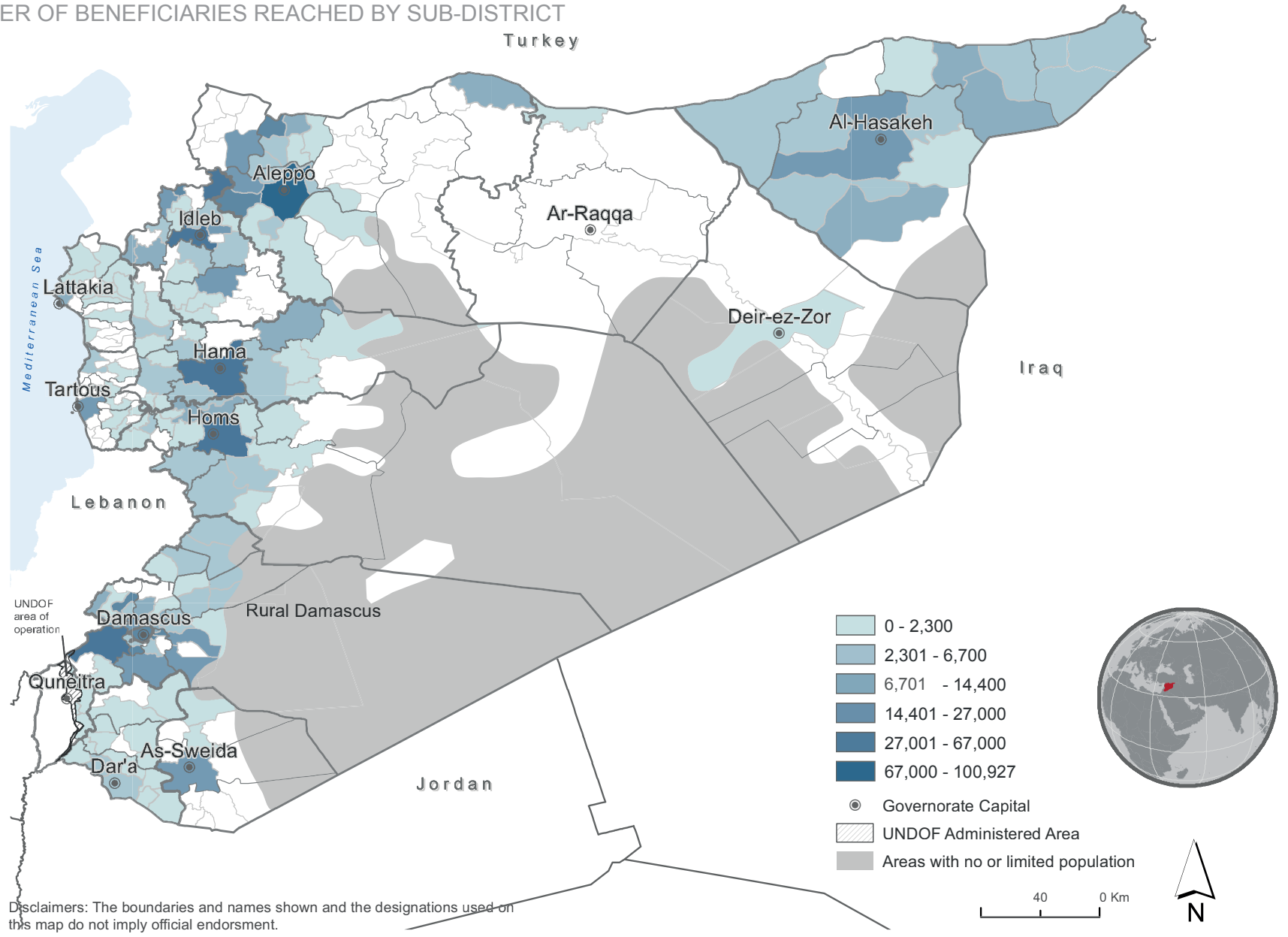
## TOTAL BENEFICIARIES REACHED JANUARY - APRIL 2016

**961,437** Total beneficiaries: 53% girls and 47% boys

**179,014** Hard to Reach Areas: 52% girls and 48% boys

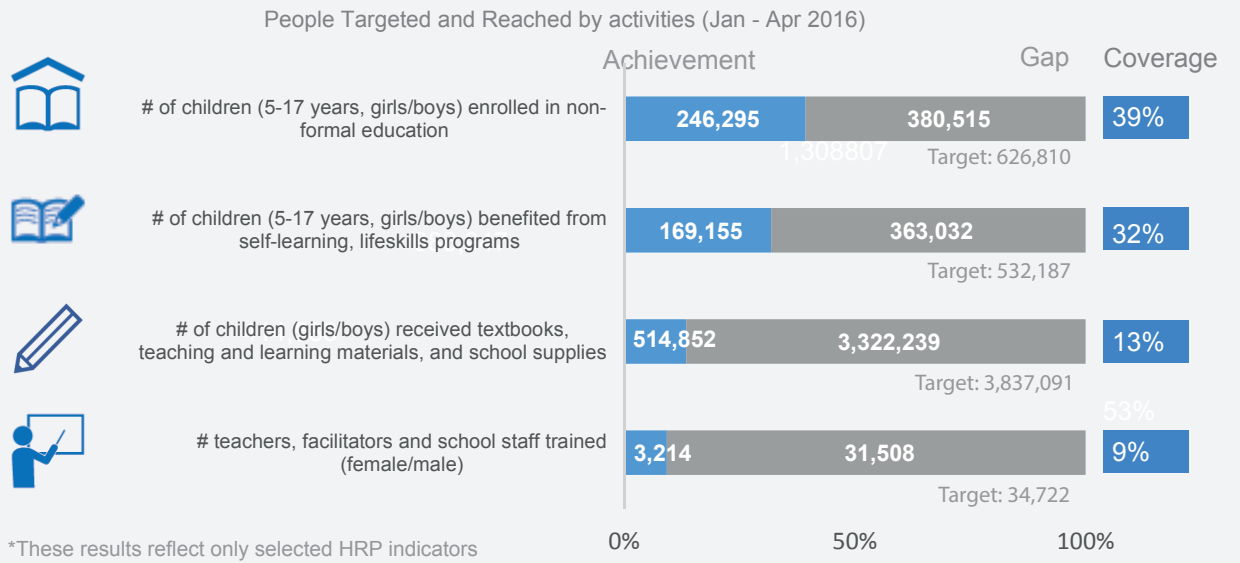
**50,265** Besieged areas: 52% girls and 48% boys

## NUMBER OF BENEFICIARIES REACHED BY SUB-DISTRICT

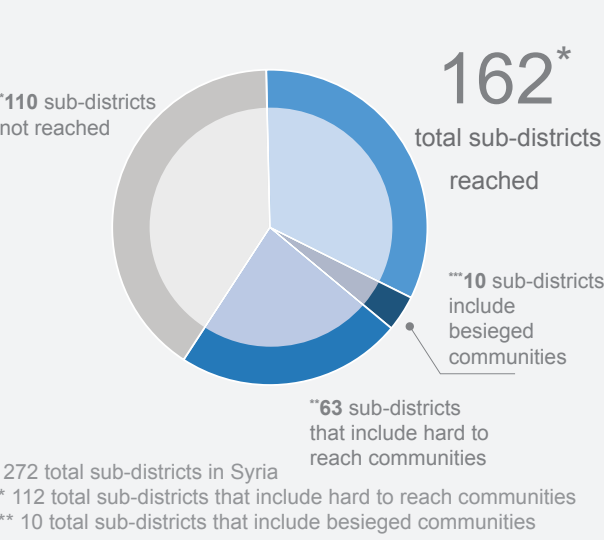


Disclaimers: The boundaries and names shown and the designations used on this map do not imply official endorsement.

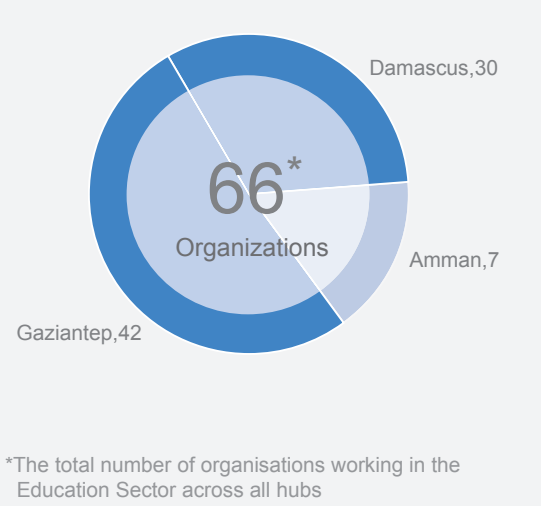
## KEY RESULTS VS TARGETS\*



## NO. OF SUB-DISTRICTS REACHED



## NO. OF ORGANIZATIONS CURRENTLY IMPLEMENTING ACTIVITIES BY HUB



## FUNDING STATUS AS OF APRIL 2016 (IN MILLION US\$)

