

# ASSITANCE COORDNATION UNIT (ACU)

**ACU IS A SYRIAN COORDINATION INSTITUTION THAT ADHERES TO THE FOUR HUMANITARIAN PRINCIPLES.**

## SCOPE OF WORK

**NEEDS ASSESSMENT**

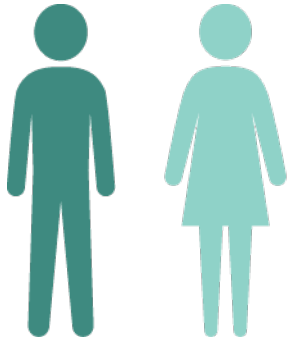
**PRIORITIZATION**

**ADVOCACY**

**MONITORING AND EVALUATION**

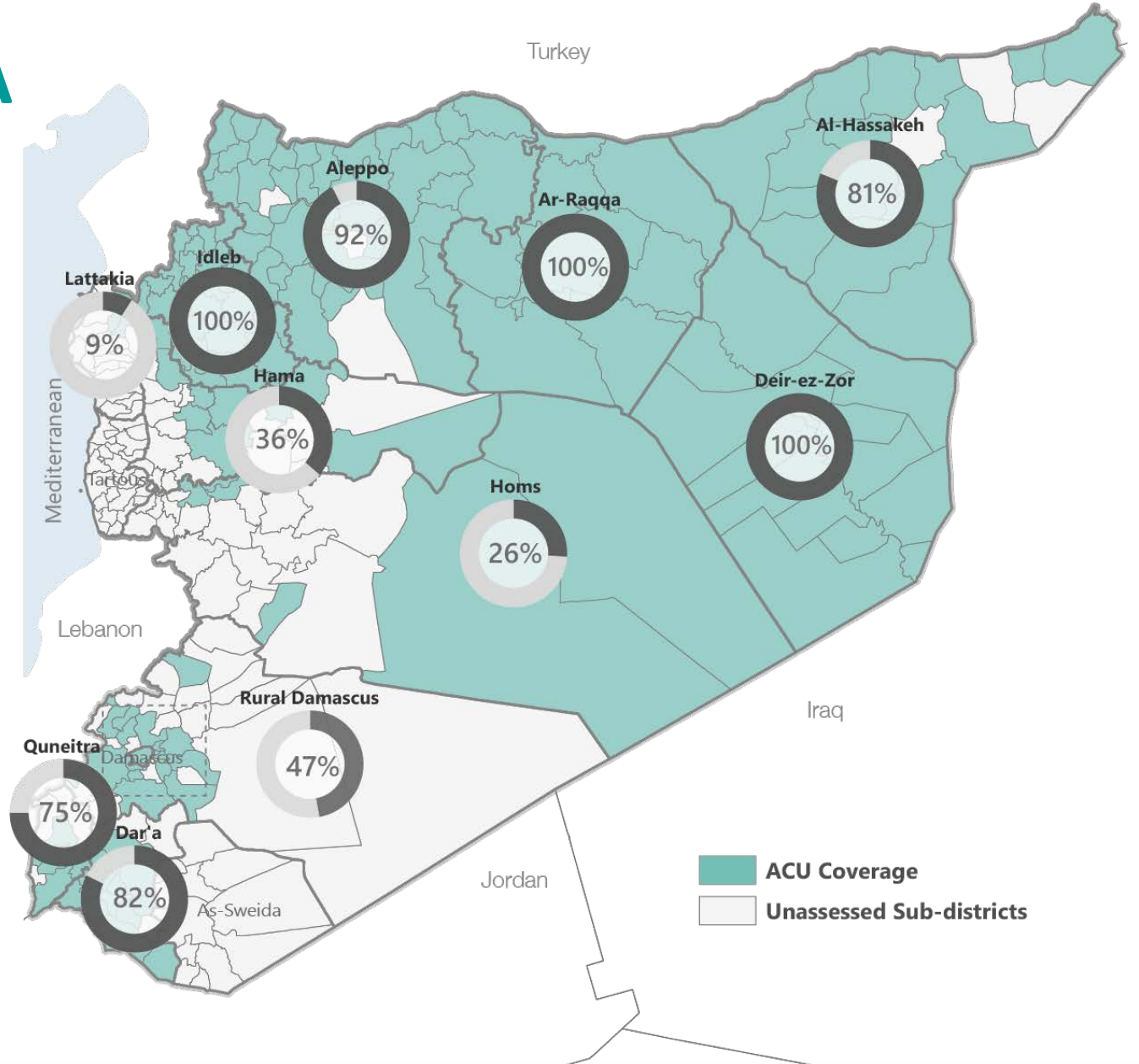
**MACRO PLANNING**

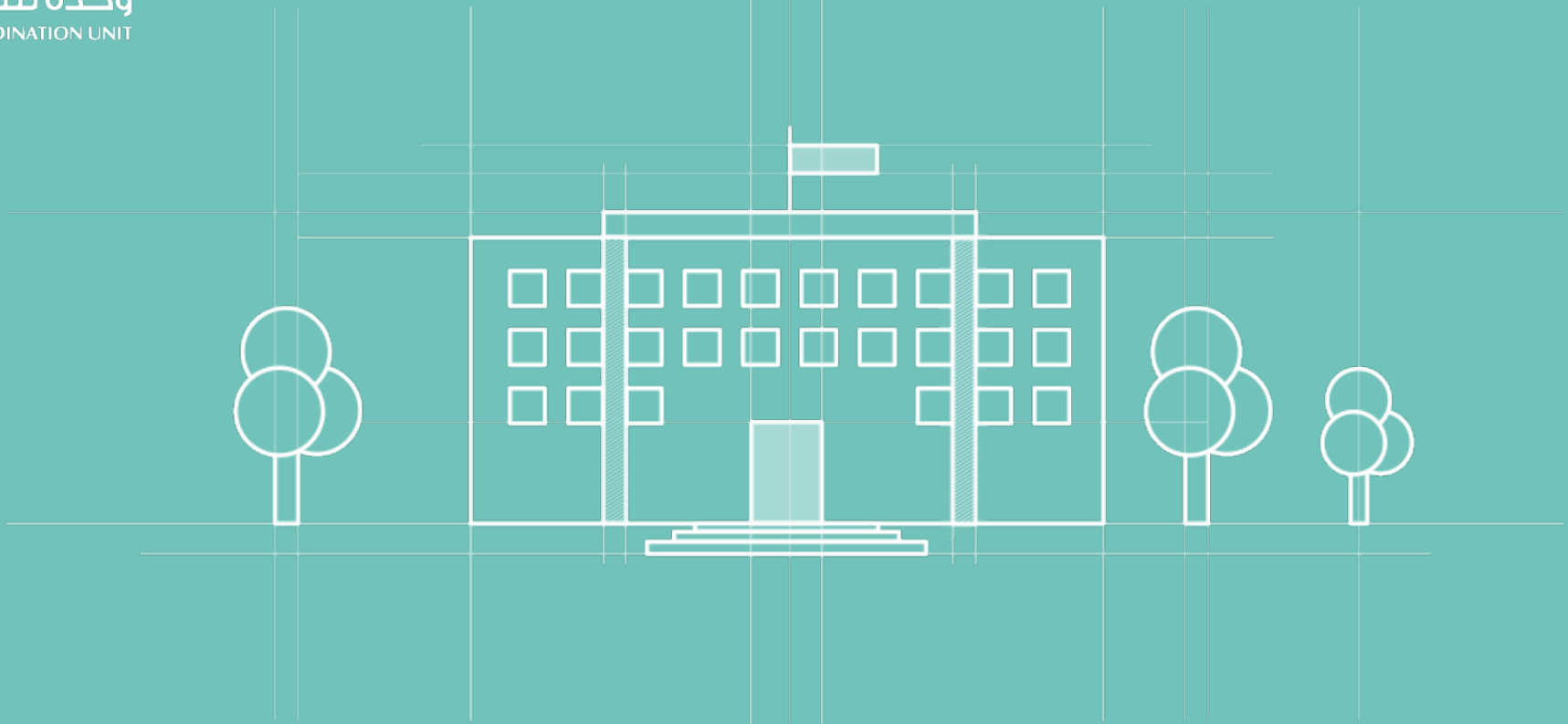
# ACU NETWORK IN SYRIA



321 Male

25 Female



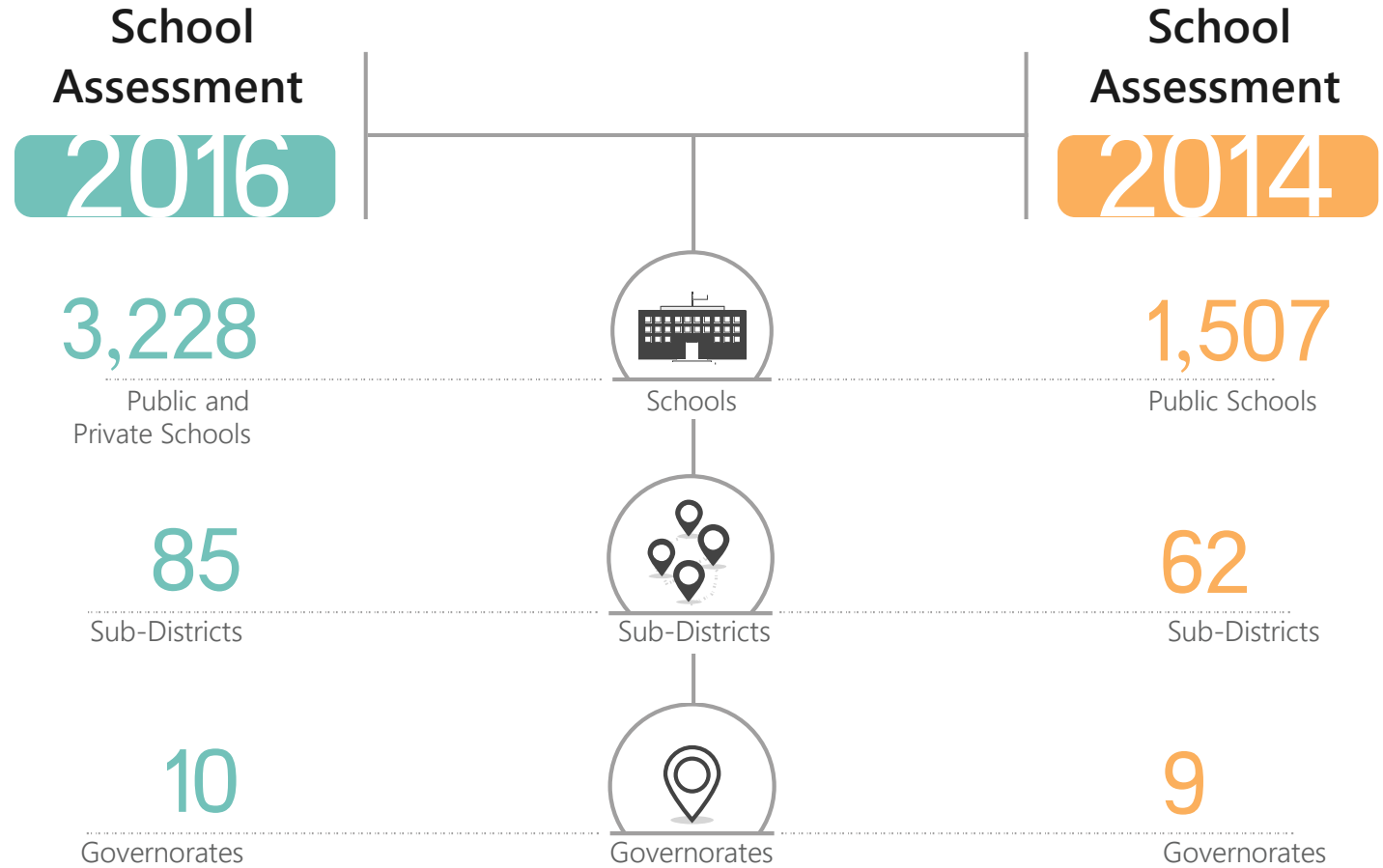


# SCHOOLS IN SYRIA

## SCHOOL ASSESSMENT 2014 AND 2016

**1,721 MORE SCHOOLS  
WERE ASSESSED IN 2016**

**23 ADDITIONAL SUB-  
DISTRICTS WERE COVERED**



# SCHOOLS IN SYRIA ASSESSMENT WORK PLAN



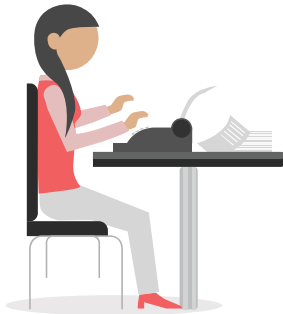
Designing and discussing  
the questionnaire



Sending the questionnaire to IMU  
enumerators by network coordinator



Data cleaning (raw data , data coding  
and analysis , processed data)



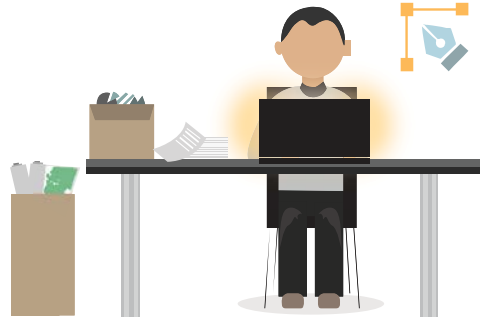
Reporting  
(Arabic)



Mapping  
using ArcGIS



Data visualization  
(tables, graphs and crosstabs)



Designing the report layout



Report revision



Report translation to English



Report release and dissemination

## METHODOLOGY

### QUALITATIVE & QUANTITATIVE METHODS WERE APPLIED

- 1) Key informants interviews (school principles, teachers, local councils, parents and students)
- 2) Direct field observations
- 3) Review of school registers and other documents when possible

### ASSESSMENT SAMPLE

**3,228** functional and non-functional schools located in **85** sub-districts in **10** governorates

### DATA COLLECTION

The data collection phase started **OCTOBER 26, 2015** and was completed within **2** months

### DATA MANAGEMENT AND ANALYSIS

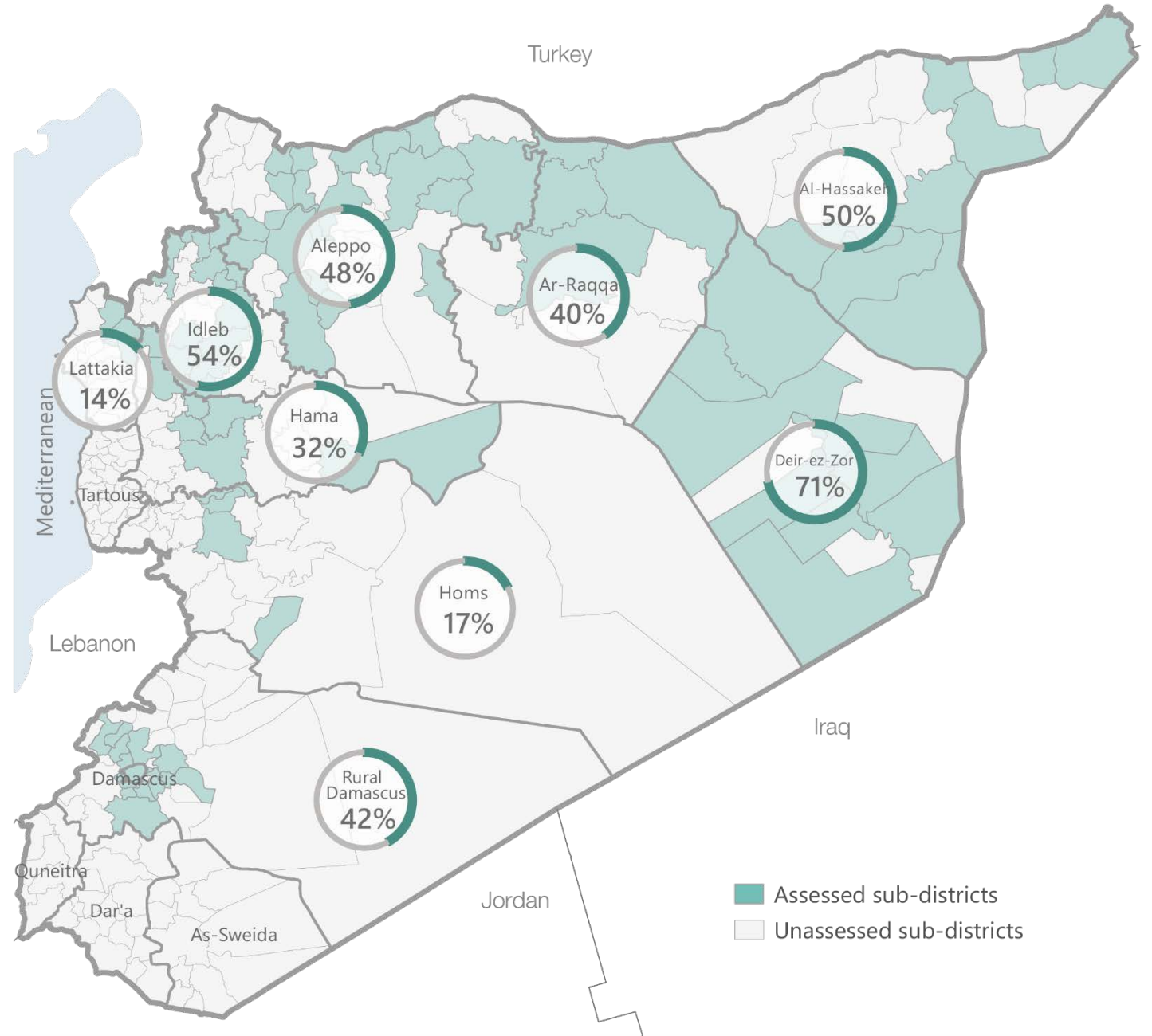
**90** Enumerators filled the questionnaires electronically on **KOBo COLLECT PLATFORM**

**SPSS** program to explore odd and missing values

**DEBRIEFING PHASE** took **15** days to be completed

Report writing, translation and design phase

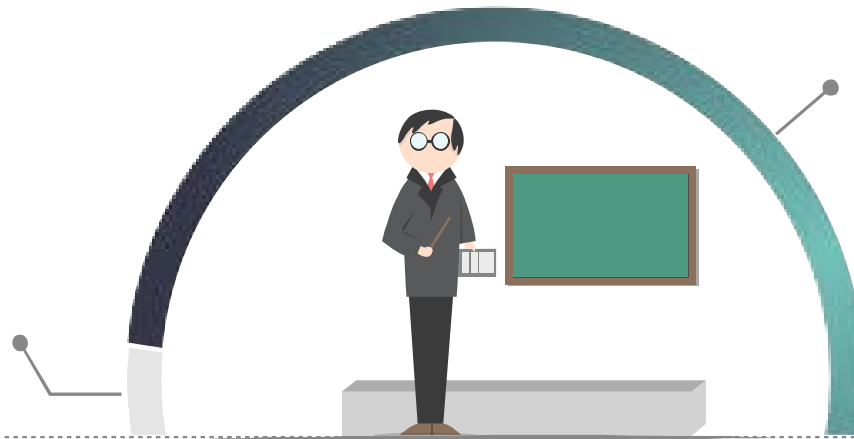
# COVERAGE MAP OF SCHOOLS ASSESSMENT





# EDUCATION SEVERITY

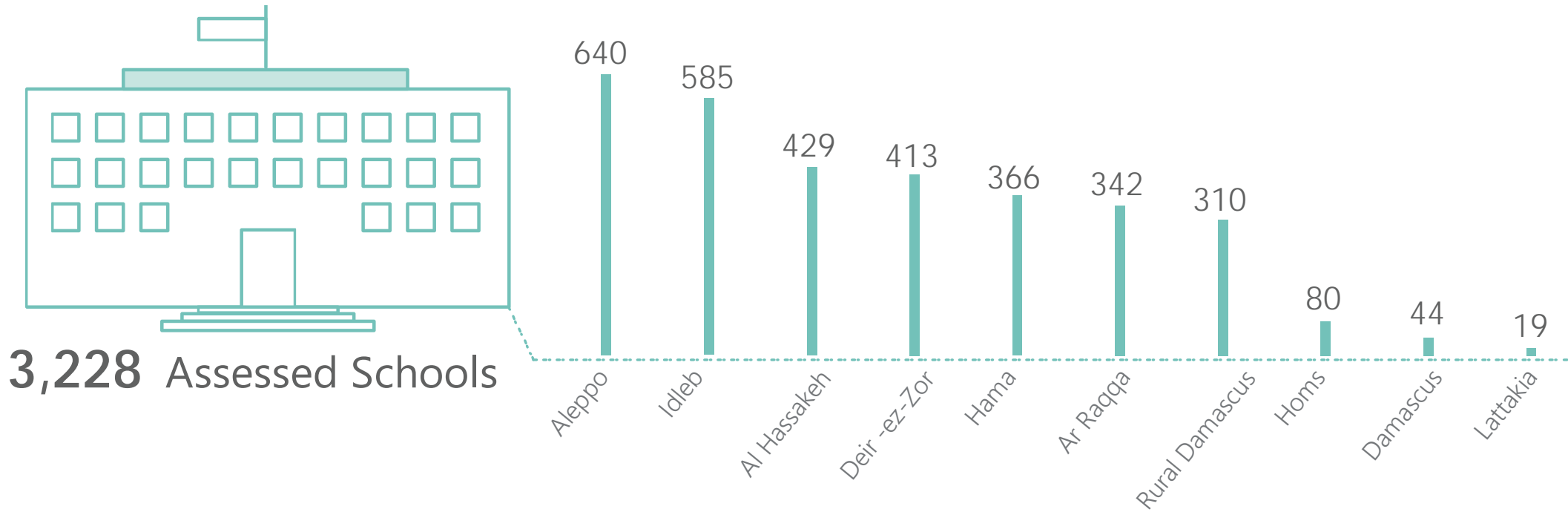
**No Problems**  
in Educational Services  
%05



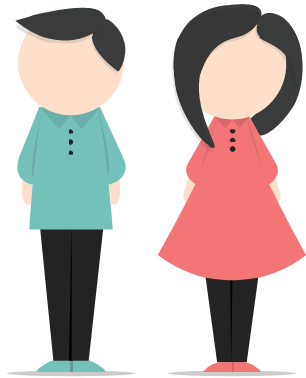
**Lack in**  
Educational Services  
**%95**

Education Severity

# NUMBER OF ASSESSED SCHOOLS



## PERCENTAGE AND NUMBER OF STUDENTS AND TEACHERS

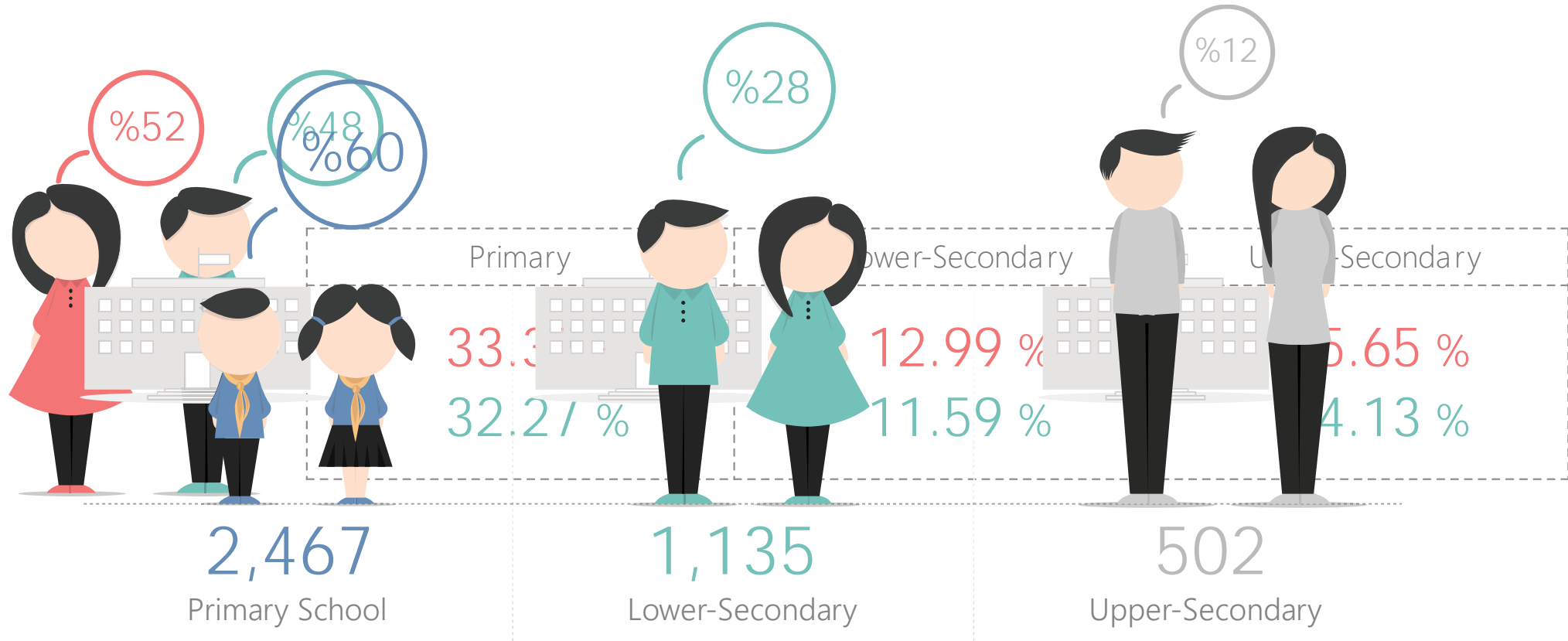


Total Number  
of Students  
**661,076**

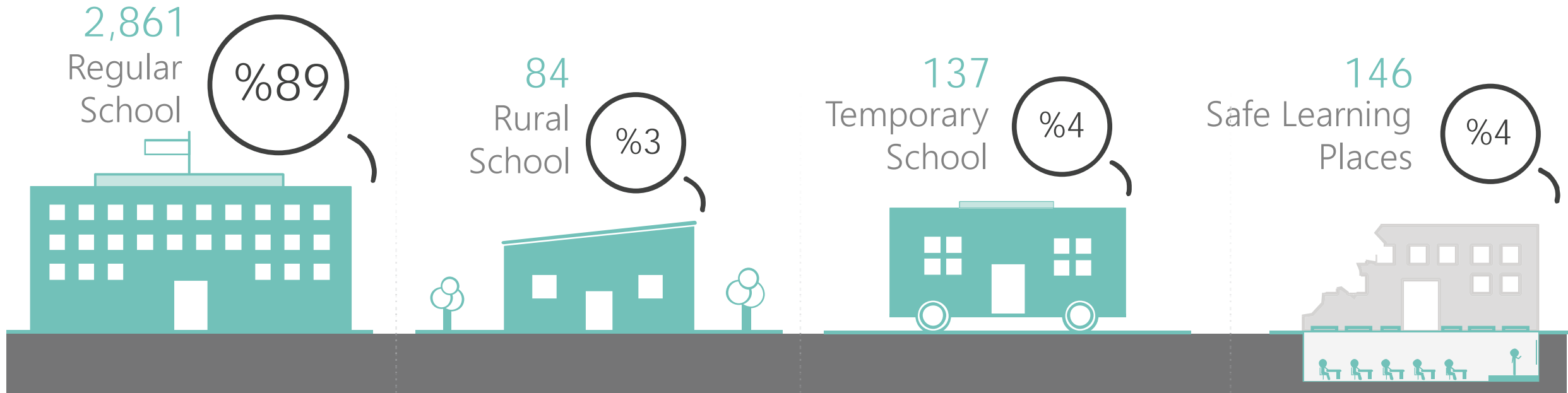


Total Number  
of Teachers  
**32,737**

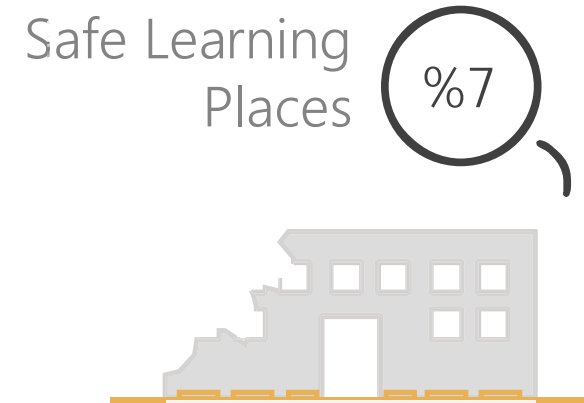
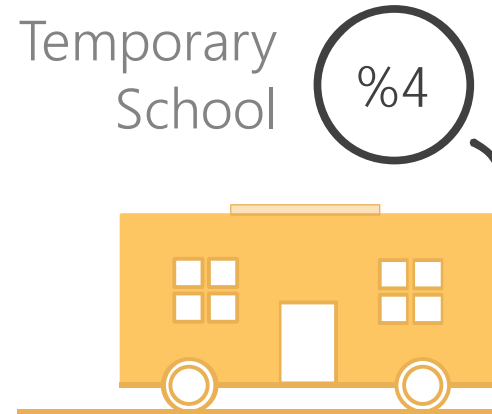
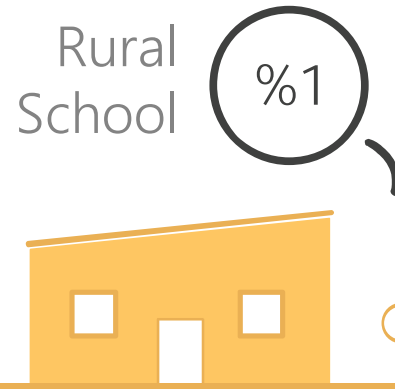
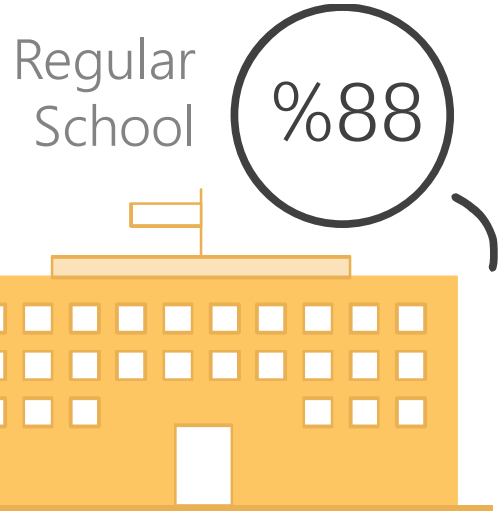
# THE PERCENTAGE OF ENROLLED STUDENTS BY SCHOOL LEVEL



## ASSESSED SCHOOLS TYPES AND PERCENTAGES



## PERCENTAGE OF ENROLLED STUDENTS ACCORDING TO SCHOOL TYPE

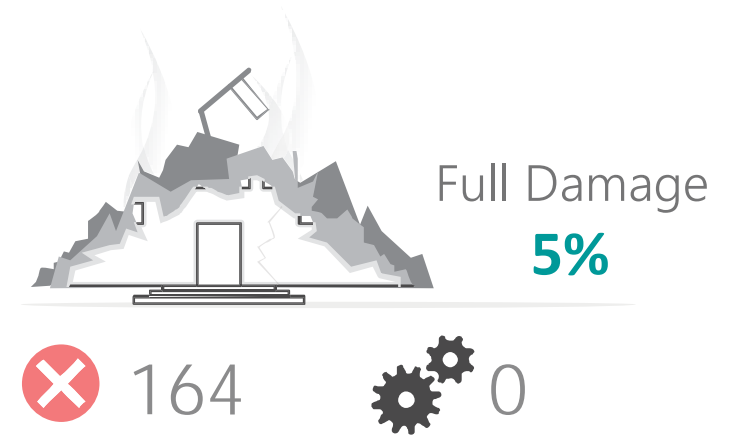
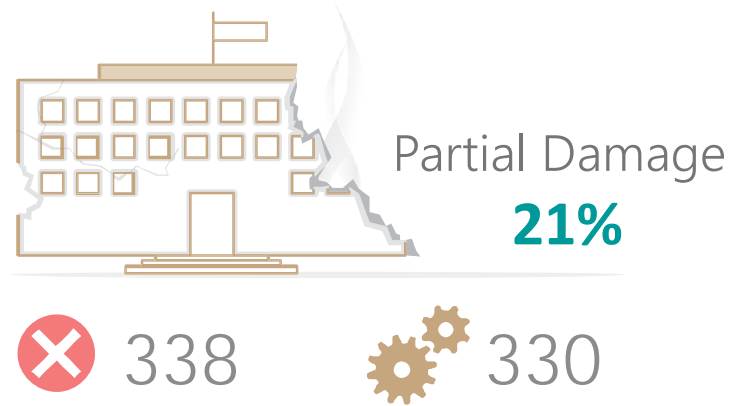
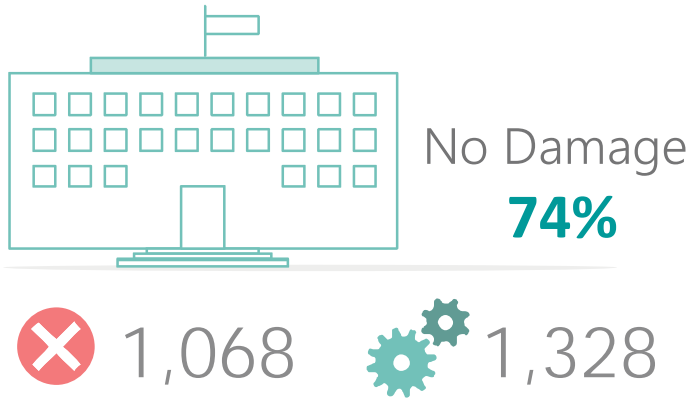


# SCHOOLS BUILDING STATUS AND SCHOOL FUNCTIONALITY

## RELEVANCE

School Functionality (more than 20 working hours weekly)

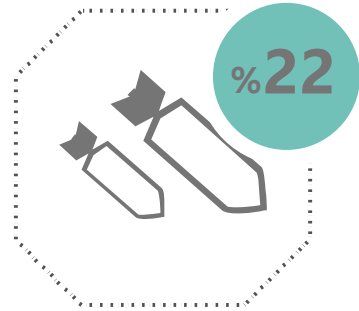
 Functional 
  Non-Functional



## REASONS OF SCHOOL NON-FUNCTIONALITY



Security Reasons



School Bombardment



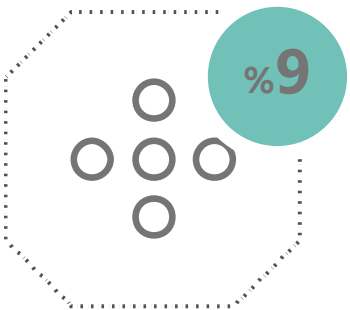
Fund Unavailability



Teaching Staff Unavailability



Used as Shelter



Other



Electricity Unavailability



Lack of Benches



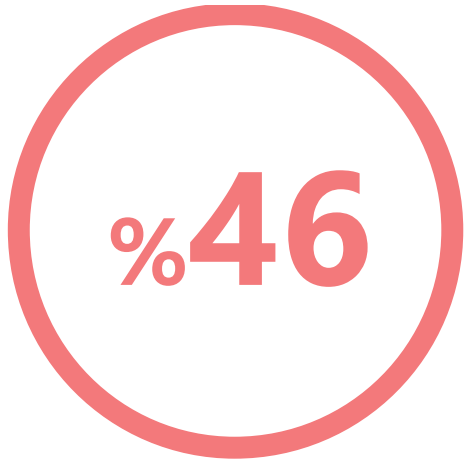
Distance from the Locality



Water Unavailability



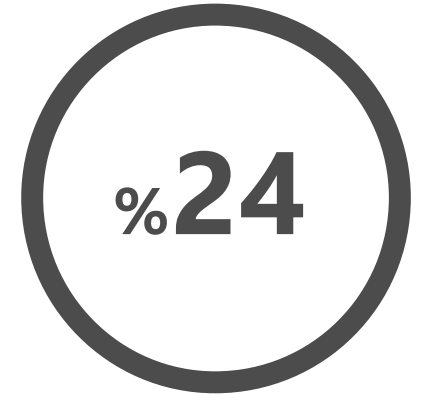
## TYPES OF USED CURRICULA



Percentage of Syrian  
Government Curriculum



Percentage of Syrian  
Interim Government Curriculum



Percentage of  
Other Curricula

## REPORT OVERVIEW

- **PART 1:**  
Number of enrolled students and teachers and assessed school capacity
- **PART 2:**  
General information on assessed schools (school functionality, type, school levels, kinds of used curricula and main reasons of school non-functionality)
- **PART 3:**  
School Support (Books- Stationery- Heating- Staff- Equipment- Meals- Electricity- Fuel- School Rehabilitation- Miscellaneous Repairs)
- **PART 4:**  
Reasons of dropouts and school need prioritization
- **ANNEX1:**
  - Book Availability Percentage within Assessed sub-districts
- **ANNEX2:**
  - Number of Assessed Schools by Sub-District

**THANK YOU**

**QUESTIONS**